

NEWS RELEASE  
Press contact:  
Renée Watson  
+61 3 9694 4244  
[rwatson@geomatic.com.au](mailto:rwatson@geomatic.com.au)



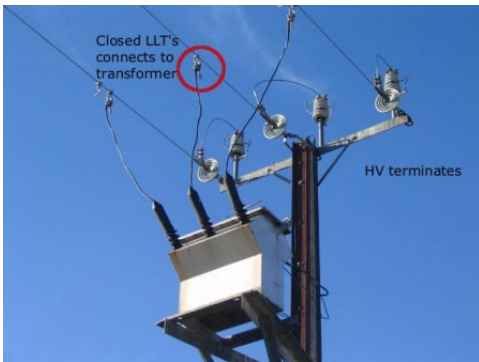
## Geomatic Technologies completes ETSA State-wide Rural Asset Survey

**21<sup>st</sup> March 2007, Adelaide, Australia** – Geomatic Technologies (GT) has completed, on behalf of ETSA Utilities the State-wide Rural Asset Survey. The project began in 2005 when ETSA engaged GT to conduct a pilot data capture survey of rural electricity assets. GT completed the pilot and was awarded the task of extending the work to encompass a state-wide audit of South Australia's rural electricity assets. A total of 191,000 powerpoles were captured throughout 700 rural feeders. GT completed the project ahead of schedule.



Above: One of several ETSA Utilities Vehicles used for the Survey.

GT was required to accurately position ( $\pm 1\text{m}$ ) assets such as poles, conductors, service connections and transformers. Important attribute information was collected at each positioning and at times 37 attributes were collected per pole. This level of data collection allowed ETSA Utilities to build an accurate and functional GIS for management of their assets. Information previously supplied to GT by the client consisted mostly of legacy information where it was available.



Above: An example of a pole with service connections and transformers.

GT's team was comprised of surveyors equipped with 4WDrive vehicles, Differential GPS Satellite positioning, laser range instruments and in-car computer equipment to complete the project. Two field teams were based within rural towns for up to 8 weeks at a time. Each team would map the surrounding area using GPS and GT's own AIMS Mapping System which was tailored to suit the project.

GT implemented a strict environmental awareness policy, including minimising vehicle movement in areas of high conservation value and regular wash down of vehicles to reduce the risk of spreading diseases and weeds through sensitive areas such as grape growing districts.

Management of environmental issues and consultation with landowners and the general public were two of the key challenges facing the project. Each field team was able to mitigate such risks, including customer complaints, bushfires, hazards, plant and animal diseases (Phytophthora, Phylloxera, OJD, Footrot, and Nightshade).

## **About Geomatic Technologies**

Geomatic Technologies Pty Ltd is a leader in the provision of spatially based business solutions, information products and services including spatial database hosting and web services, photogrammetry, linear asset mapping and field workforce solutions. The company services Government, Transportation, Utilities, Telecommunications and other commercial enterprises.

For more information please contact Geomatic Technologies Pty Ltd on +61 3 9694 4244, e-mail [info@geomatic.com.au](mailto:info@geomatic.com.au) or visit [www.geomatic.com.au](http://www.geomatic.com.au)